

MARKING MACHINE

HIGH SPEED SCANNING PRINTING
HIGH PRECISION
HIGH EFFICIENCY
ENVIROMENT-FRIENDLY
LOW MAINTENANCE

**EASY TO
INSTALL
CONFIGURE
CODE**



MODEL	KLC30 / KLC60	MIN LINE WIDTH	0.02MM
LASER POWER	30W/60W	MIN CHARACTER	ANY ADJUSTMENT WITHIN THE MARKING RANG
LASER WAVELENGTH	10.6μm/10.2μm/9.3μm	SUPPORTED FORMATS	DXF/PLT/AI/PNG/JPG/BMP
MARKING PRECISION	≤3-5μ	MACHINE POWER	600W/1500W
MARKING AREA	50-300MM(CAN CHOOSE OTHER RANGE)	VOLTAGE INPUT	110V-220V/50-60Hz
APPLICATION	PLASTIC / GLASS / NON-METALLIC MATERIAL	COOLING MODE	AIR COOLING / WATER COOLING
MARKING SPEED	≤180000MM/MIN		



THE ONLY MANUFACTURER TO OFFER

**NO CONSUMABLES
MAINTENANCE FREE
EASY TO OPERATE**

CO2 LASER



LASER BOX CODING SYSTEM

LASER CODING CORE TECHNOLOGY



The mainframe



Communication interface



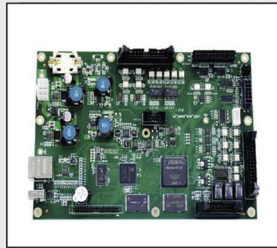
Chassis technology



Optical pach adjustment can be adjusted 360 degrees



Separable precision connector



Independently developed main board high making technology



High speed 2d scanning galvanometer



Optical pach adjustment module dual axis can be adjusted 360 degrees

WIDELY USED

EFFICIENT STABLE FLEXIBLE



Methacrylate



Crystal



Plastic



Cosmetic packaging



Electronic product



Wood



Printers for marking and industrial coding.

www.kodyka.com

📍 Avenida de Mendavia 11, Pabellón Nº 16
26009 Logroño,
La Rioja, Spain

☎ Tif : +34 638 868 342
✉ info@kodyka.com